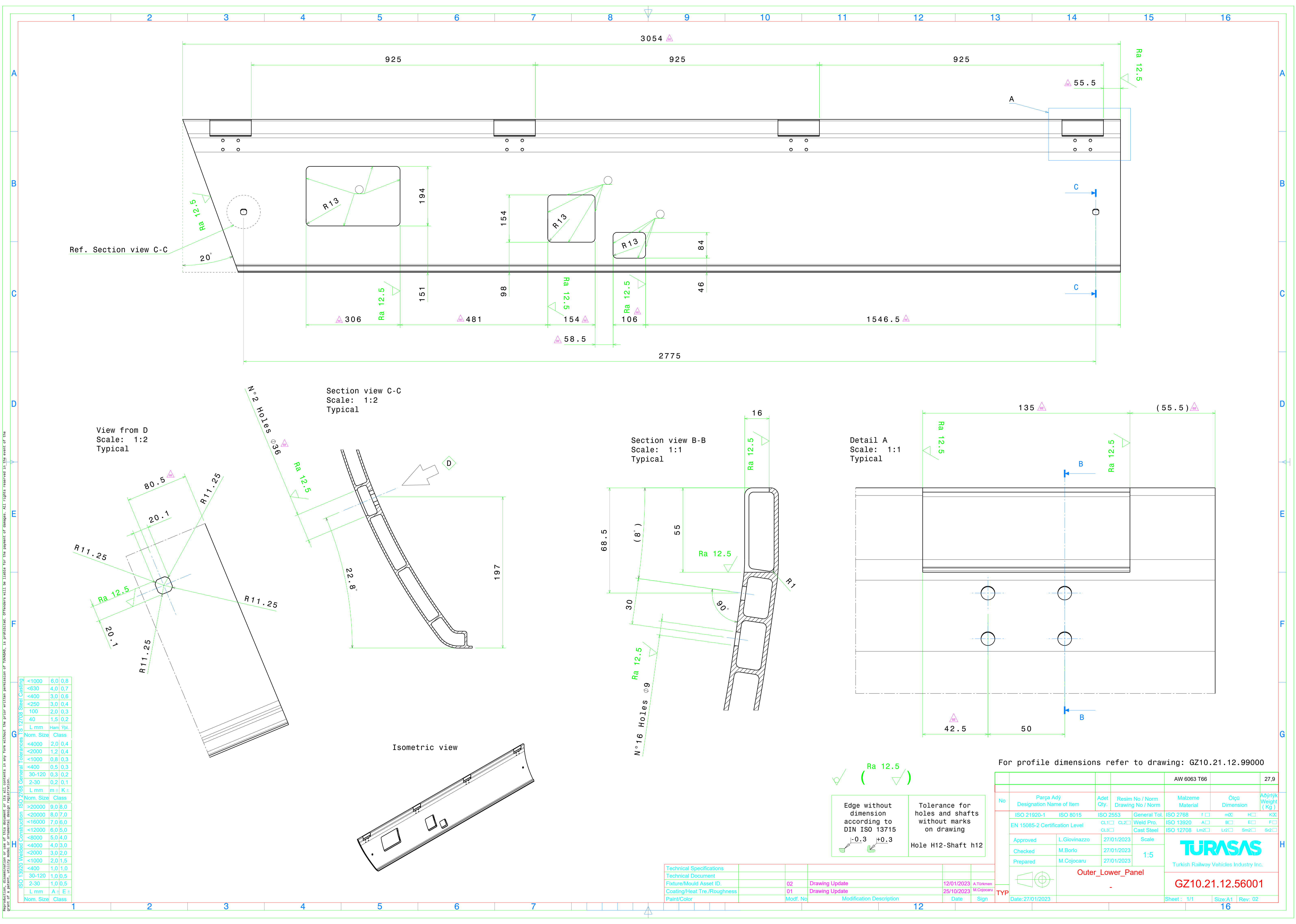



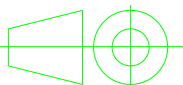
Reproduction or use of this document or its all contents in any form without the prior written permission of TURASAS is prohibited. Offenders will be liable for the payment of damages. All rights reserved in the event of the right of a patent, utility model, design, copyright.



ISO 13020 Welder Construction		
<1000	6.0	0.8
<630	4.0	0.7
<400	3.0	0.6
<250	3.0	0.4
100	2.0	0.3
40	1.5	0.2
L mm	Hamt	Ypl.
Nom. Size Class		
<4000	2.0	0.4
<2000	1.2	0.4
<1000	0.8	0.3
<400	0.5	0.3
30-120	0.3	0.2
2-30	0.2	0.1
L mm	m ±	K ±
Nom. Size Class		
>20000	9.0	8.0
<20000	8.0	7.0
<16000	7.0	6.0
<12000	6.0	5.0
<8000	5.0	4.0
<4000	4.0	3.0
<2000	3.0	2.0
<1000	2.0	1.5
<400	1.0	1.0
30-120	1.0	0.5
2-30	1.0	0.5
L mm	A ±	E ±
Nom. Size Class		

Technical Specifications					
Technical Document					
Fixture/Mould Asset ID	02	Drawing Update	12/01/2023	A. Türkmen	
Coating/Heat Tre./Roughness	01	Drawing Update	25/10/2023	M. Cojocar	
Paint/Color	Modf. No	Modification Description	Date	Sign	

Edge without dimension according to DIN ISO 13715	Tolerance for holes and shafts without marks on drawing
-0.3 $+0.3$	Hole H12-Shaft h12

For profile dimensions refer to drawing: GZ10.21.12.99000						
				AW 6063 T66		27.9
No	Parça Adı Designation Name of Item	Adet Qty.	Resim No / Norm Drawing No / Norm	Malzeme Material	Ölçü Dimension	Ağırlık Weight (kg)
	ISO 21920-1 ISO 8015	ISO 2553	General Tol.	ISO 2768 f □ m □ H □ K □		
	EN 15085-2 Certification Level	CL1 □ CL2 □ CL3 □	Weld Pro.	ISO 13920 A □ B □ E □ F □		
			Cast Steel	ISO 12708 Lm2 □ Lr2 □ Sm2 □ Sr2 □		
	Approved	L.Giovinazzo	27/01/2023	Scale		
	Checked	M.Borlo	27/01/2023	1:5		
	Prepared	M.Cojocar	27/01/2023			
		Outer_Lower_Panel		Turkish Railway Vehicles Industry Inc.		
		-		GZ10.21.12.56001		
TYP	Date:27/01/2023			Sheet : 1/1	Size:A1	Rev: 02